

EXHIBITION

Salone Internazionale del Mobile Milano 2018



La ricerca stilistica di **Angelo Cappellini** prosegue nell'ottica dell'incontro fra classico e moderno, dando vita ad una nuova collezione di prodotti in cui si fondono magistralmente eleganza e semplicità, decorazione e comfort.

Al centro, un nuovo concetto di imbottito: un'anima moderna vestita con l'eleganza e la cura dei dettagli proprie dell'arredamento classico. Mobili e complementi reinterpretano tecniche e stili del passato in un linguaggio contemporaneo, come l'uso dell'intarsio e del ricamo per soluzioni decorative inedite. Classico e moderno si incontrano in un nuovo stile, lo "Stilnovo" di **Angelo Cappellini**.

ANGELO
CAPPELLINI

The stylistic research of Angelo Cappellini continues, in the perspective of an encounter between classic and modern, generating a new collection of products that masterfully combine elegance and simplicity, decoration and comfort.

At the centre, a new concept of upholstered furniture: a modern spirit dressed with elegance, and the attention to detail typical of classic decor.

The furnishings and complements reinterpret techniques and styles of the past in a contemporary language, like the use of inlay work and embroidery for unusual decorative solutions.

Classic and modern meet in a new style, the "Stilnovo" of Angelo Cappellini.

www.angelocappellini.com

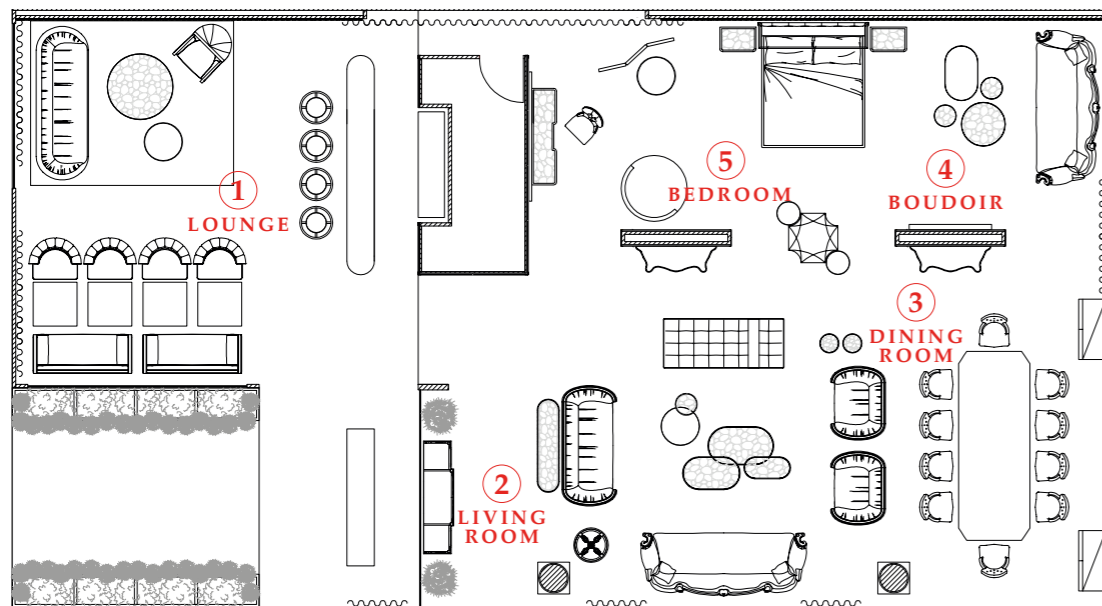


ANGELO CAPPELLINI
Hall 2, Booth D23-D27



Lo stand presentato da **Angelo Cappellini** invita ad essere ospiti in un moderno hotel di lusso. Il passaggio per un giardino segreto ci introduce alla lounge bar, che propone arredi e soluzioni progettuali per spazi conviviali; oltre questa zona si apre una grande suite, divisa in due ambienti comunicanti: una maestosa zona giorno, con salotti e tavolo da pranzo, e la zona notte, dominata dal letto a baldacchino. Un percorso guidato, dallo spazio pubblico a quello privato, intimo, fino al cuore dello stile.

*The stand presented by **Angelo Cappellini** invites viewers to become the guests of a modern luxury hotel. A passage through a secret garden leads to the lounge bar, which features design solutions and furnishings for convivial spaces. Beyond this zone a large suite opens up, divided into two connected spaces: a majestic living area, with sitting areas and a dining table, and the bedroom zone, featuring a canopy bed. A guided pathway from public space to the private, innermost heart of style.*



INTERIORS



LOUNGE BAR



**INTERIOR 1
LOUNGE**



**INTERIOR 2
LIVING ROOM**



**INTERIOR 3
DINING**



**INTERIOR 4
BOUDOIR**



**INTERIOR 5
BEDROOM**

LOUNGE BAR

composition as photo fin. NCH

Art. 34743/R fin. VHS
Stool with embroidery seat
TX3010/15 Cat. C
cm. 48x78 h



LOUNGE

INTERIOR 1

Art. 34101/D2
2 Seat sofa
TX4126/20 Cat. D
cm. 185x81x134 h

Art. 30133 fin. VMS
Table bronze mirror
cm. 80x80x77 h

Art. 34100 fin. VMS+MOS
Armchair
TX3010/14 Cat. C
cm. 96x78x86 h



LOUNGE

INTERIOR 1

Art. 34102/D3 fin. OR1

3 seat sofa
TX3034/15 Cat. C
cm. 285x100x90 h

Art. 34301/R12 fin. MOS

Coffee table
Special marble top OP-Onice Turkey
cm. Ø 120x30 h

Art. 34110 fin. OR1

Stool
TX4057/24 Cat. D
cm. Ø 73x48 h

Art. 39108 fin. NEO

Armchair
TX9819/20 Cat. F
cm. 81x93x140 h



LIVING ROOM

INTERIOR 2

Art. 34103/D3 fin. OR1

3 seat sofa
TX3010/24 Cat. C
cm. 292x114x92 h

Art. 34104 fin. VMS

Armchair
TX4127/1 Cat. D
cm. 130x100x81 h

Art. 34302/12 fin. VMS+MOB

Coffee table
Marble top NP - Nero Portoro
cm. 120x70x28 h

Art. 34302/105 fin. VMS+MOB

Coffee table brass inlaid wooden top
cm. 105x60x35 h

Art. 34302/85 fin. VMS+MOB

Coffee table brass inlaid top
Marble top CA - Calacatta Oro
cm. 85x40x43 h

Art. 34302/04 fin. VMS+MOB

Side table brass inlaid wooden top
cm. Ø 40x50 h

Art. 34108 fin. VMS

Stool
TX3010/35 Cat. C
cm. Ø 70x44 h



LIVING ROOM

INTERIOR 2



Art. 34107 fin. NCH+MOB
Day bed
TX3034/20 Cat.C
cm. 200x90x41 h



Art. 34300 fin. VMS+MOS
Side table
Special marble top pink Onix
cm. Ø 35x55 h



Art. 34104/D3 fin. VMS
3 seat sofa
TX4127/1 Cat. D
cm. 220x100x81 h

DINING ROOM

INTERIOR 3

*Characterized by
inlay grey oak, black oak, silver larch
and brass inserts in silver and gold colour*

Art. 34116/R35 fin. NCH+MOS
Table inlaid top
cm. 345x130x75 h

Art. 34097 fin. NCH
Chair
TX3027/21 Cat. C
cm. 52x57x97 h

Art. 34097/P fin. NCH
Chair
TX3027/21 Cat. C
cm. 63x64 x103 h



DINING ROOM

INTERIOR 3



Art. 34117/R fin. MOS
Bar cabinet inlaid doors
cm. 112x50x167 h



Art. 34118/R fin. MOS
Cabinet inlaid doors
cm. 112x50x167 h



Art. 250 fin. CH
Console wooden top
cm. 150x49x90 h

Art. 34115/S fin. LBP senza oro
Convex mirror
cm. Ø 100

BOUDOIR

INTERIOR 4

Art. 34105/D3 fin. VMS

3 seat sofa
TX3027/3 Cat. C
cm. 285x95x95 h

Art. 34109 fin. VMS

Stool
TX3027/3 Cat. C
cm. 100x62x44 h

Art. 34301/R08C fin. MOS

Coffee table brass inlaid top
cm. Ø 80x40 cm

Art. 34301/R04J

Side table brass inlaid top
cm. Ø 40x50 h

Art. 43062 fin. MOS

GYSELLE Mirror
cm. 150x10x240 h



BEDROOM

INTERIOR 5



Art. 34111 fin. VMS
Stool with embroidery
PX9915 Cat.E
cm. 90x90x40 h

Art. 34112 fin. VMS
Stool
TX3010/20 Cat.C (upper part)
PX9915/Cat.E (band with MOS accessory)
TX3010/5 Cat.C (bottom part)
cm. Ø 45x40 h



20 | ANGELO CAPPELLINI _ Salone del Mobile Milano 2018



Art. 60204 fin. O
Dressing table with mirror
cm. 236x58x240 h

Art. 8052/P fin. O
Armchair
TX9809/20 Cat. E
cm. 63x61x90 h

21



Art. 7601/B fin. VMS
Night table
cm. 67x45x67 h

Art. 34200/19 fin. VMS+MOB
Canopy Bed
TX3027/20 Cat. C
cm. 204x230x210 h

Art. 34200 IMB. CIELINO
Upholstery for canopy
TX1024/20 Cat. A

BEDROOM
INTERIOR 5



Art. 41090/MR fin. MOS
Screen
TX5820/20 Cat. E
cm. 170x6x200 h

Art. 34110 fin. OR1
Stool
TX2011/15 Cat. B
cm. Ø 70x41 h



Art. 34106 fin. VMS+MOS
Armchair
TX2010/1 Cat. B
cm. Ø 120x71 h

NEW CLASSIC INTERIORS



ANGELO CAPPELLINI & C. s.r.l.
SHOWROOM via Turati, 4
22060 - CABIATE (CO) - ITALY
tel. +39 031 769 2811

www.angelocappellini.com

SALONE INTERNAZIONALE DEL MOBILE
MILAN, APRIL 17th - 22nd 2018
Hall 2, Booth D23-D27

